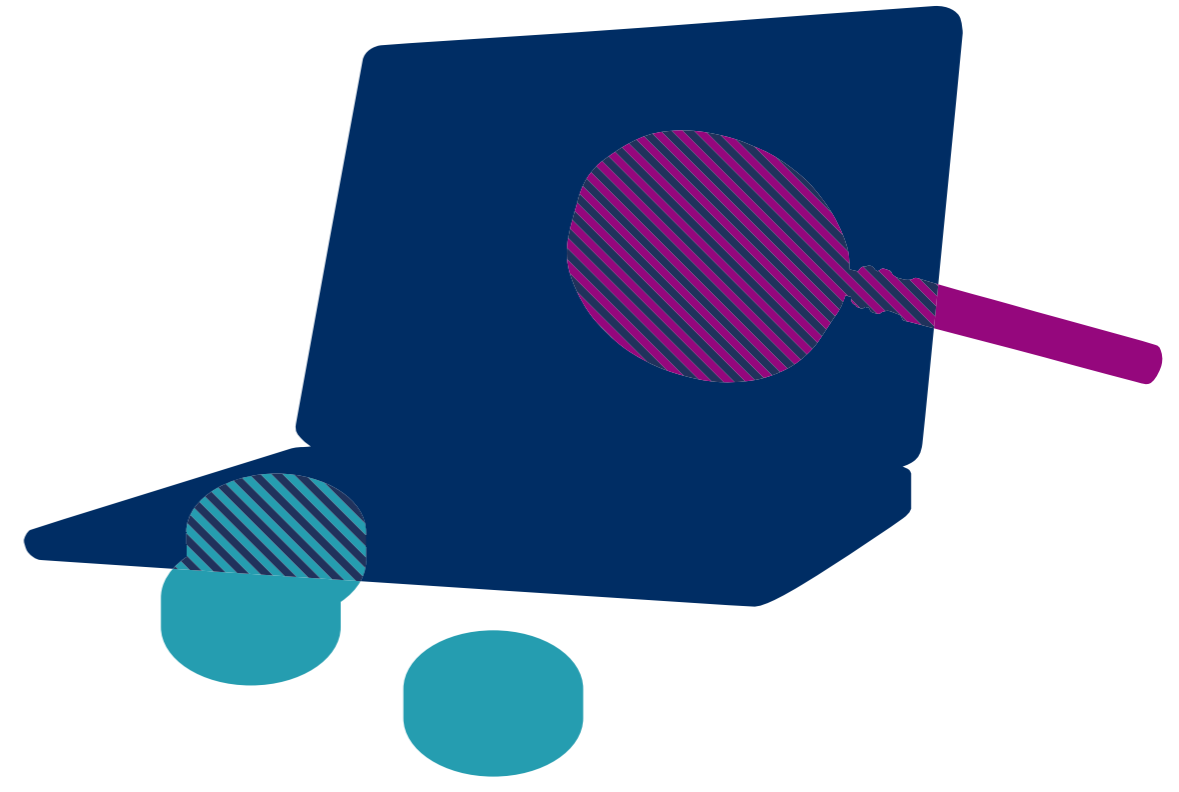


Super-deduction tax incentive

A round-up of the key tax incentives available to businesses investing in plant and machinery.



Super-deduction

What is it?

The government aims to encourage investment and boost productivity with this new allowance, announced in the 2021 Budget. **From 1 April 2021 to 31 March 2023**, companies can claim 130% capital allowances on plant and machinery investments that would usually qualify for 18% tax relief.

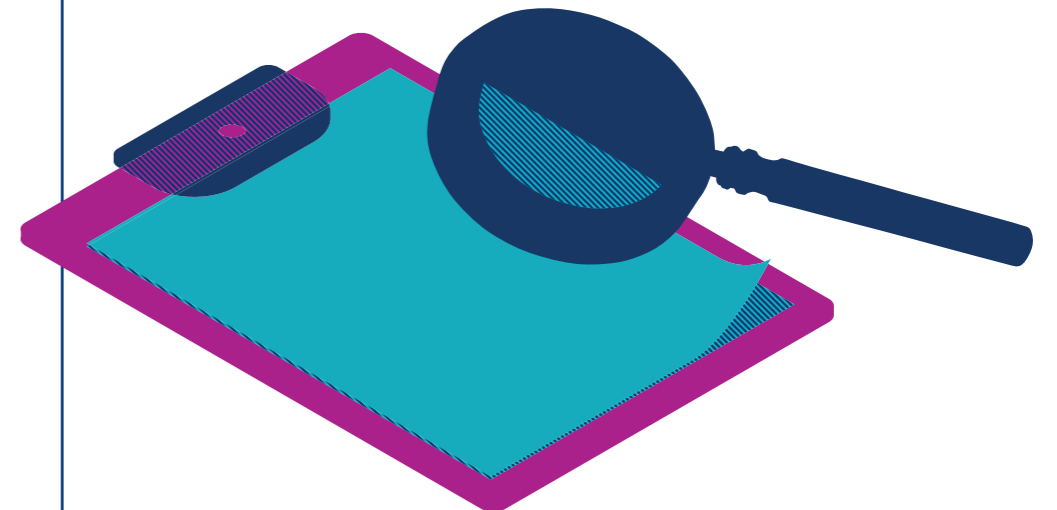
There is also a first-year allowance (FYA) of 50% for assets that would usually qualify for the special rate of 6% tax relief.



The super-deduction means businesses can cut taxes by up to 25p for every £1 they invest. For example, a company investing £100,000 can claim a deduction of £130,000 against taxable profits, saving up to 19% of that – or £24,700 – on its corporation tax bill.

Who can claim?

Companies that pay corporation tax and which invest in plant or machinery on or after **1 April 2021** are eligible. Sole traders, partnerships and limited liability partnerships do not qualify.



What assets qualify?

The capital investment must be in **new and unused plant and machinery** and there is no expenditure limit. Assets can be funded via Hire Purchase, but cannot be leased as ownership of asset must be demonstrated.

Eligible assets for the super-deduction

- Cranes and diggers
- Machinery and tooling
- Computer equipment and servers
- Office furniture
- Commercial vehicles such as tractors, lorries and vans (not cars)

Eligible assets for the 50% FYA

- Electrical and lighting systems
- Hot- and cold-water systems
- Air-conditioning systems
- Lifts
- Solar shading

Ineligible assets

- Second-hand or used assets
- Cars
- Buildings and structures (excluding integral features)

Find out more about the super-deduction and 50% FYA allowance here: [gov.uk/guidance/super-deduction](https://www.gov.uk/guidance/super-deduction)

Find out more about how Royal Bank could support your business growth with asset finance at [rbs.co.uk](https://www.rbs.co.uk)

Security, guarantees or indemnities may be required. Product fees may apply. Finance subject to status and is only available for business purposes. Asset finance (except contract hire) is provided by Lombard North Central PLC.

Registered in England & Wales No. 337004. Registered Office: 250 Bishopsgate, London, EC2M 4AA. Contract hire and fleet management product provided by ALD Automotive Ltd, trading as Lombard Vehicle Solutions (LVS), Oakwood Park, Lodge Causeway, Fishponds, Bristol BS16 3JA. ALD Automotive Ltd is registered in England & Wales No. 987418. LVS is a product solution provided for Lombard by ALD and there is a financial connection between Lombard and ALD as a result. The Royal Bank of Scotland plc. Registered in Scotland No. SC083026. Registered Address: 36 St Andrew Square, Edinburgh EH2 2YB. Financial Services Firm Reference Number is 114724. Authorised by the Prudential Regulation Authority and regulated by the Financial Conduct Authority and Prudential Regulation Authority.